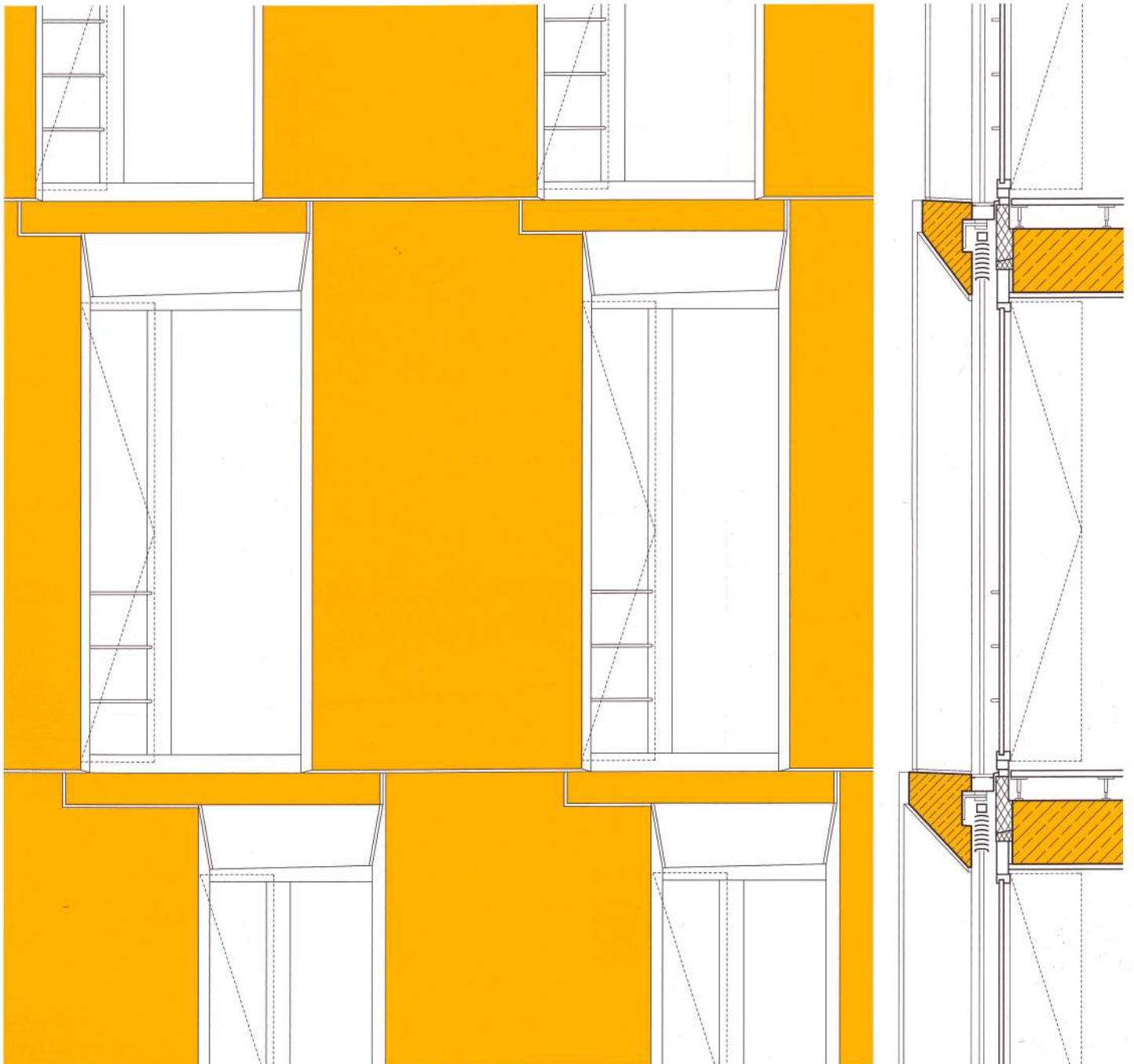
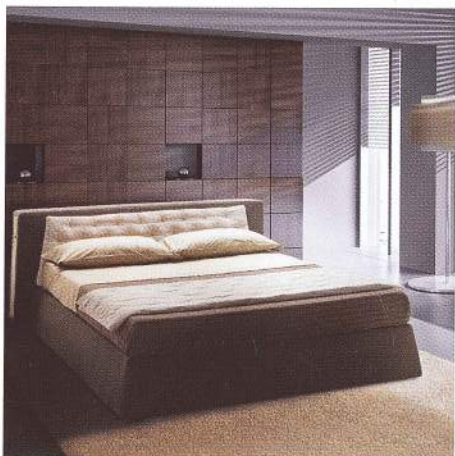


English Edition

DETAIL

Review of Architecture · Solid Forms of Construction · Vol. 2015 · 5





Adaptable comfort

Milano Bedding offers a stylish range of beds, sofas and sofa beds to meet both contract and residential needs, with design, function and comfort at the heart of the product. The Cayman is a contemporary design featuring a distinctive headboard that incorporates slide-out shelving fitted with an LED lamp, power socket and USB port. It is available with different types of slatted and pocket-spring bed bases and, depending on the fabric, the bed covering can be totally removable and washable.

Jeremie, a sofa and sofa bed, has three new versions made with Designers Guild fabrics. Its daybed shape recalls the Art Deco style, which can be played down or emphasised by its variants: Trendy, in a turquoise fabric with white details and an orange base; Fashion, in shades of deep pink with floral striped details and green base; and Glamour, in elegant taupe and brown colours. The seat is feather and high-resilient polyurethane foam, with feather backrest pillows and a solid beechwood base, in standard wenge finish or RAL colour on demand.

□ Milano Bedding
Italy
☎ +39 (0)362 307 144
www.milanobedding.it



Diffusion collection introduced by bespoke designer

The Hughie coffee table in shagreen and metal, shown above, recreates the glamour of the Art Deco era and is just one of many designs by Simon Orrell Atelier – a division of the workshop of custom-made furniture maker Simon Orrell Designs. This statement coffee table with its stylish metal legs is finished in natural shagreen and bronze patinated hammered steel. Size is 110 cm wide x 50 cm deep and 42 cm high, and it is also available in other finishes.

This long-established furniture designer has been creating custom-made pieces for interior designers and private clients since 2001. Specialising in luxury materials such as parchment, paua, pen shell, violet oyster, hammer shell, gesso, gold and silver leaf, mother of pearl and cracked eggshell, as well as the natural shagreen, Simon Orrell has carved out a niche for his brand of distinctive finishes.

The launch this year of the new division of the company means that a diffusion collection of stylish interior pieces is now available using the same materials and made by the skilled artisans who create the custom-made furniture, but more readily available to order. The products include mirrors and side tables, as well as coffee, console and

dressing tables. Two other examples in natural shagreen are the Sephera two-drawer dressing table (not shown), which also features bone stringing to create a stylish piece with a serpentine front reminiscent of Art Deco design, and the Opie side table, below, centre. This is from the spring/summer 2015 range and has a striking 'Euclid' geometric top and metal legs. It measures 60 cm high x 40 cm in diameter.

Straw marquetry is another of the unusual finishes available and the lamp base shown below, also new for this year, offers a contemporary spin on a traditional technique. Straw work was used for boxes and small items of furniture in the 18th century in England and in France.

The sunburst pattern was a popular motif of the Art Deco period and has been given an update on this lamp base. Split and pressed strips of straw are dyed and applied to the surface of each piece to create an eye-catching design. The lamp base is 30.5 cm high x 20 cm wide x 10 cm deep.

□ Simon Orrell Designs
United Kingdom
☎ +44 (0)20 7371 9339
www.simonorrelldesigns.com

